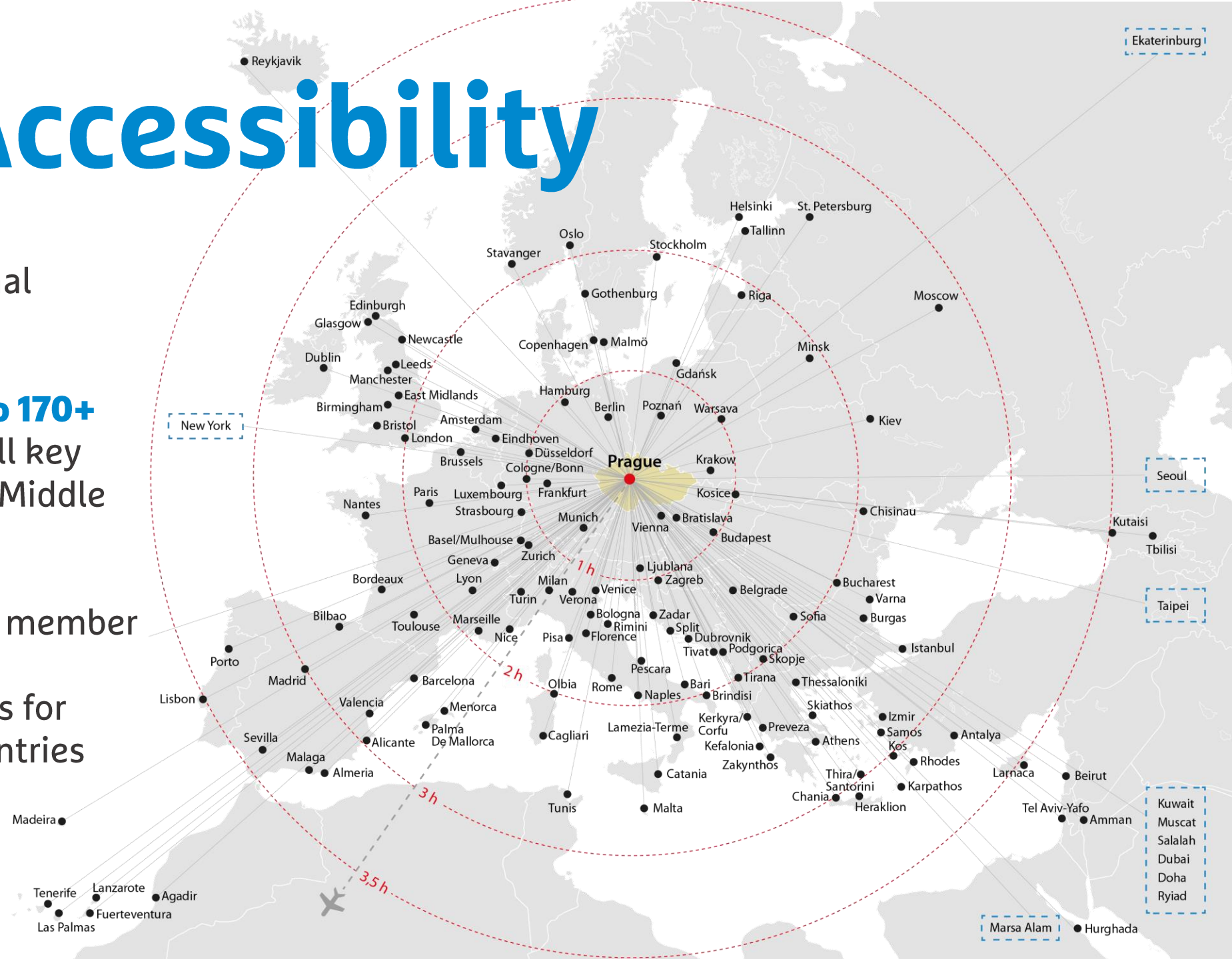




**Wow**  
**Prague InSpires**

# Great Accessibility

- Awarded International Airport
- **Direct connection to 170+ destinations**, incl. all key European cities, US, Middle East & East Asia
- EU & Schengen area member
- No visa requirements for citizens from 89 countries



Click this icon  
for more info

**World's TOP 5 Meeting Destinations**  
(ICCA Ranking 2022)

**The World's Greenest City**  
(TravelBird Green Cities Index 2018)

city center

**World's 12<sup>th</sup> Safest Country**  
(Global Peace Index 2023)

**Travelers' Choice Best of the Best**  
(TripAdvisor Travelers' Choice 2022)



# City Overview

World's 2<sup>nd</sup> Best Transportation System  
(Time Out travel magazine 2023)



Main tourist attractions within **walking distance**



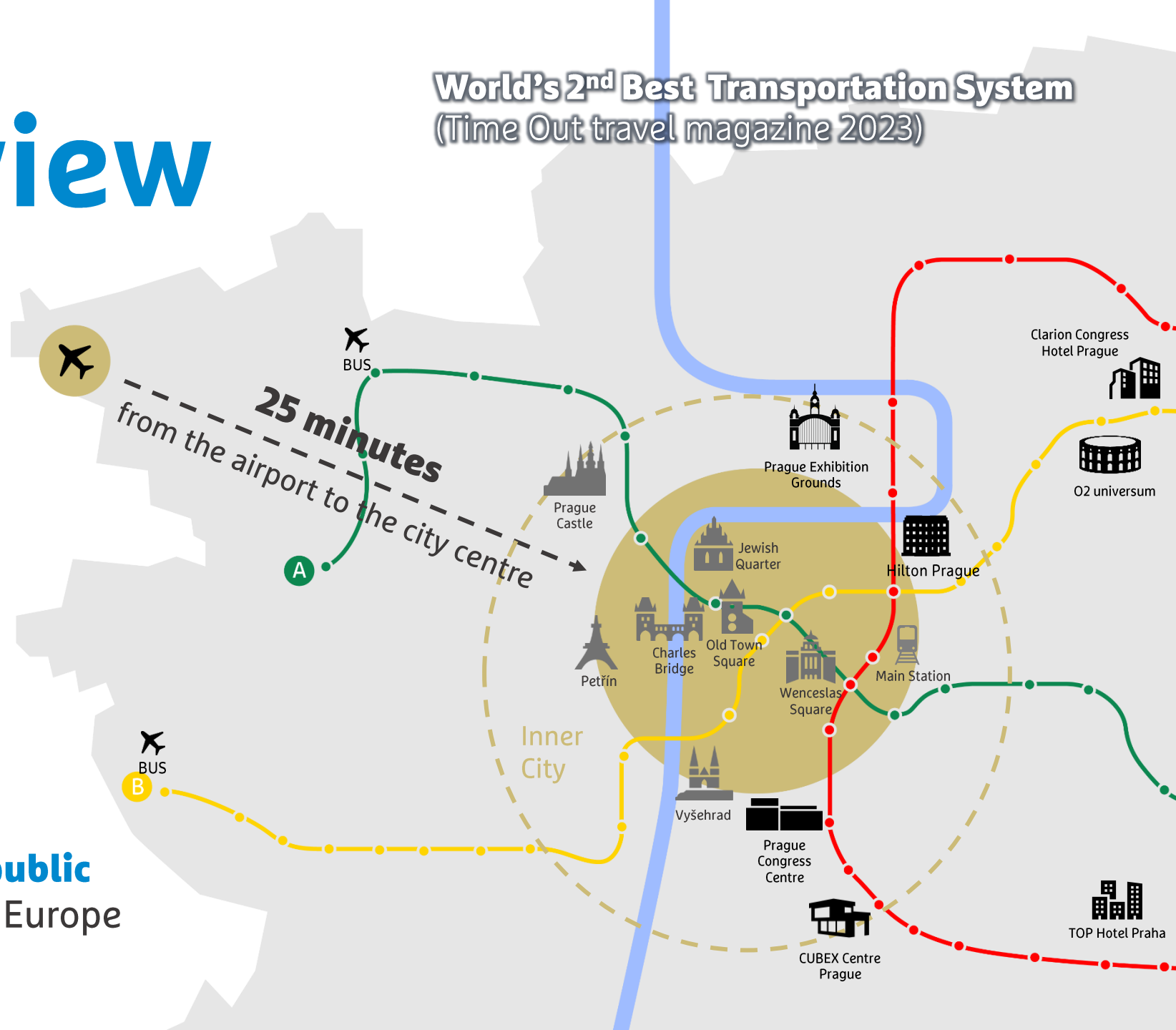
More than **45 000 rooms** at reasonable prices



Great **value for money**



One of the most **efficient public transportation** systems in Europe





# #SustainabilityInSpires

**The World's Greenest City**  
(TravelBird Green Cities Index 2018)

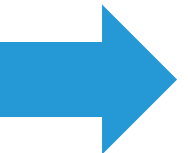


13<sup>th</sup> most developed country in achieving  
the **UN's Sustainable Development Goals 2022**





# Congress & Conference Venues




# O2 universum





Modern, unique & multifunctional venue



O<sub>2</sub> universum

 Total capacity: **10 000 pax**  
(28 000 pax incl. O2 arena)

 Largest hall: **3 800 seats**

 Exhibition space: **13 000 m<sup>2</sup>**

 Opened in September 2019



# Prague Congress Centre



Magnificent view of the city



-  Total capacity: **9 300 pax**
-  Largest hall: **2 764 seats**
-  Exhibition space: **13 000 m<sup>2</sup>**
-  Completely refurbished in 2017

# Cubex Centre Prague



Cubex  
Centrum  
Praha



Total capacity: **1 700 pax**  
incl. City Conference Centre



Largest hall: **1 000 seats**



Exhibition space: **1 200 m<sup>2</sup>**



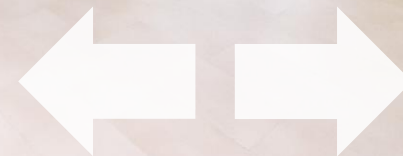
Opened in June 2018



Interiors inspired by Czech  
cubist architecture



Cubex  
Centre  
Prague



# Na Výstavišti



Total capacity: **5 363 pax**



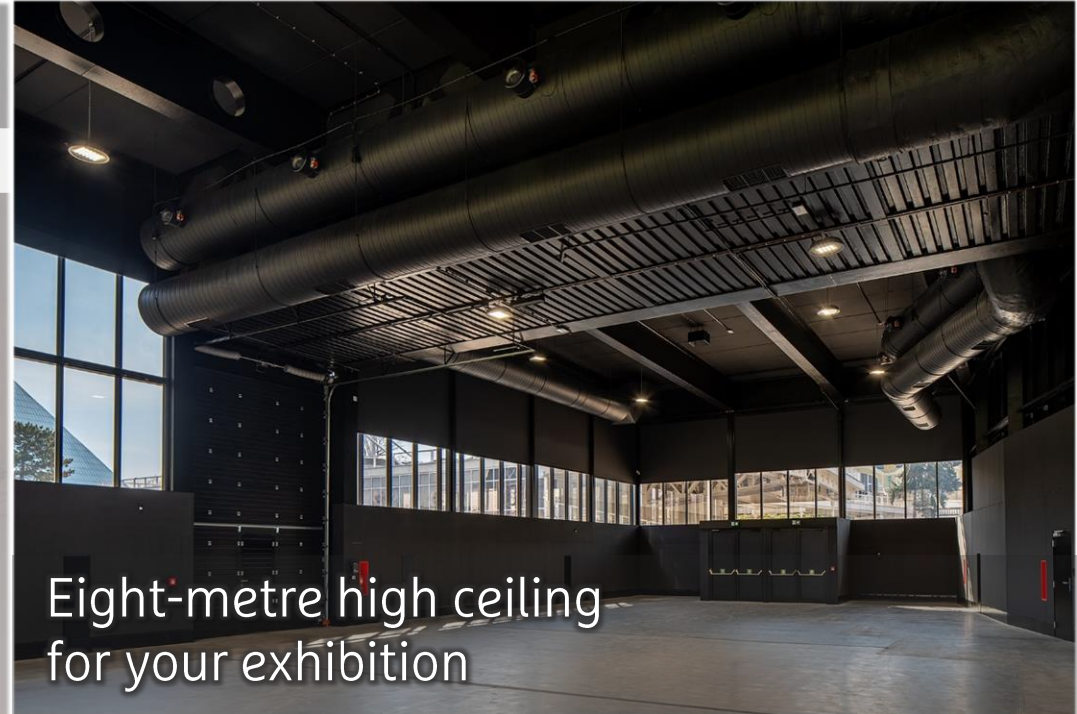
Largest hall: **1 450 seats**



Exhibition space: **5 500 m<sup>2</sup>**



Newly renovated in 2022



Eight-metre high ceiling  
for your exhibition



Nejlepší akce jsou  
Na Výstavišti



# City Conference Centre



Total capacity: **480 pax**



Largest hall: **300 seats**



Exhibition space: **181 m<sup>2</sup>**



Renovated in 2018



Every hall has its own foyer



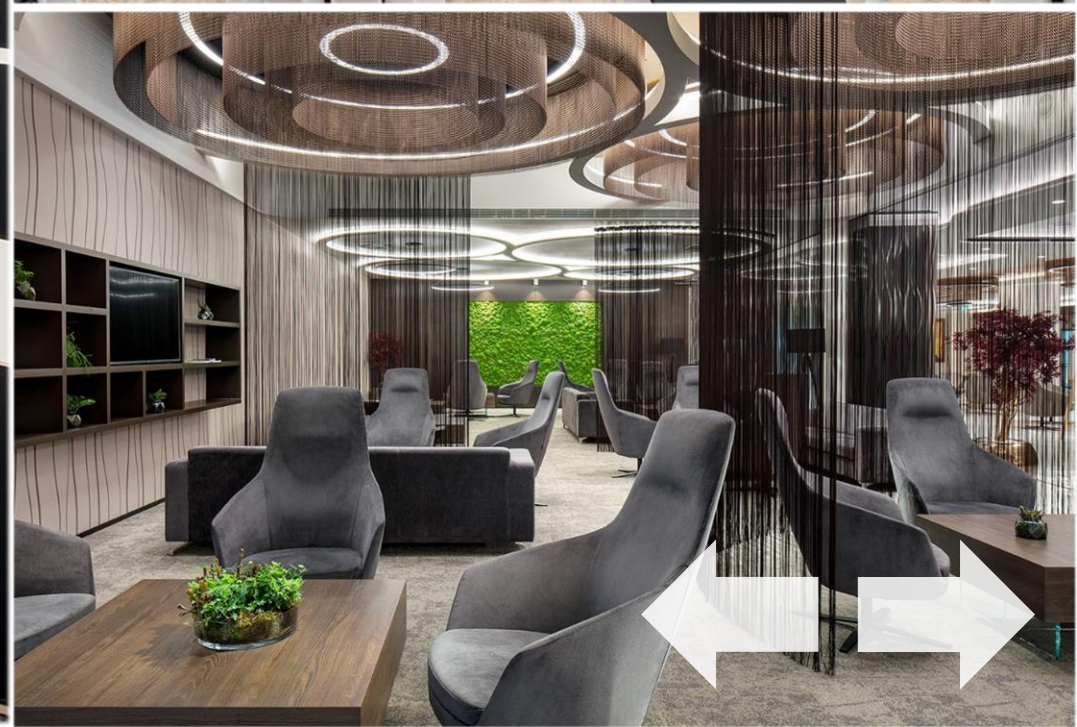
Conference  
Centre City

# Conference Hotels

(over 1.000 pax)



# Clarion Congress Hotel Prague



Largest hall (theatre): **1500 pax**



Number of Meeting Rooms: **18**



Hotel Rooms: **559**

# Hilton Prague



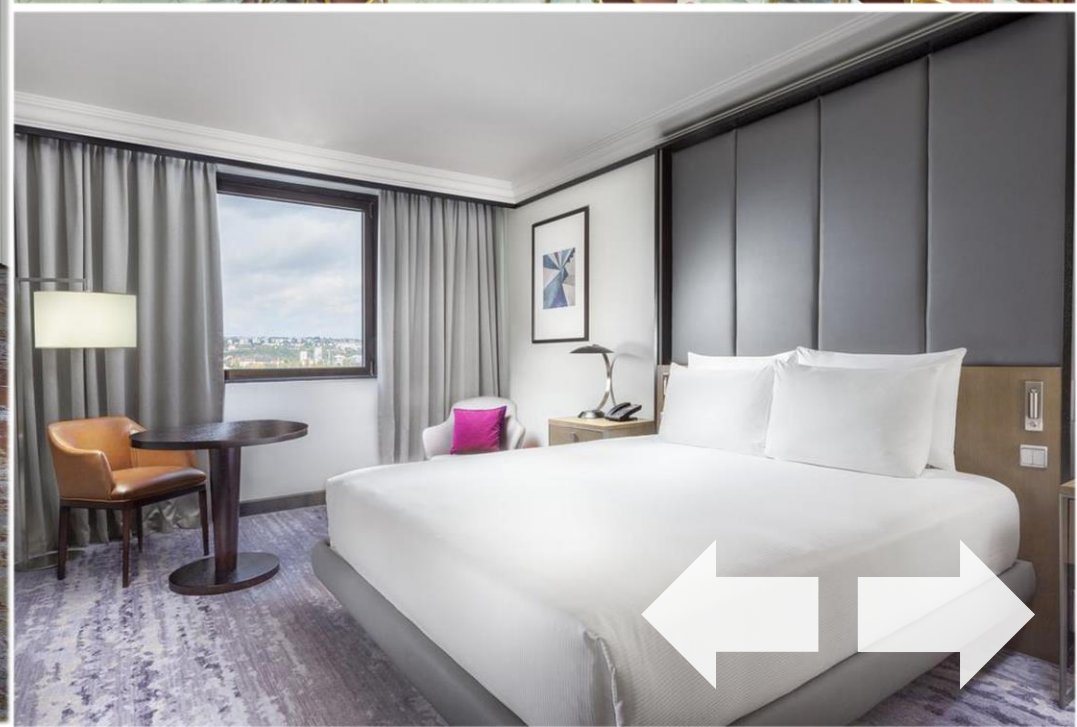
Largest hall (theatre): **1350 pax**



Number of Meeting Rooms: **37**



Hotel Rooms: **791**



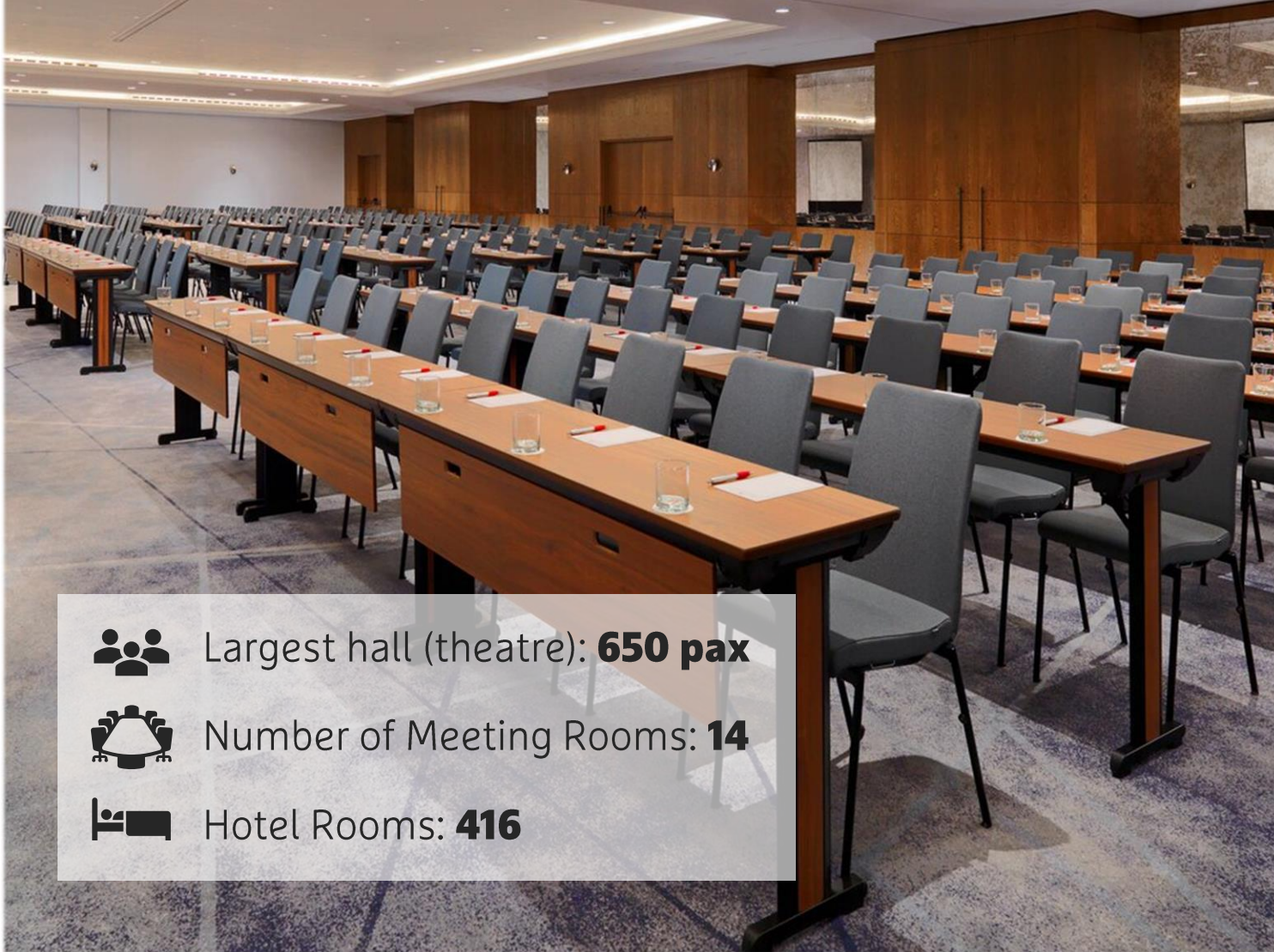
# Conference Hotels

(over 500 pax)





# Prague Marriott Hotel



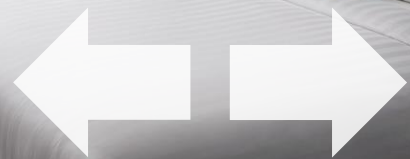
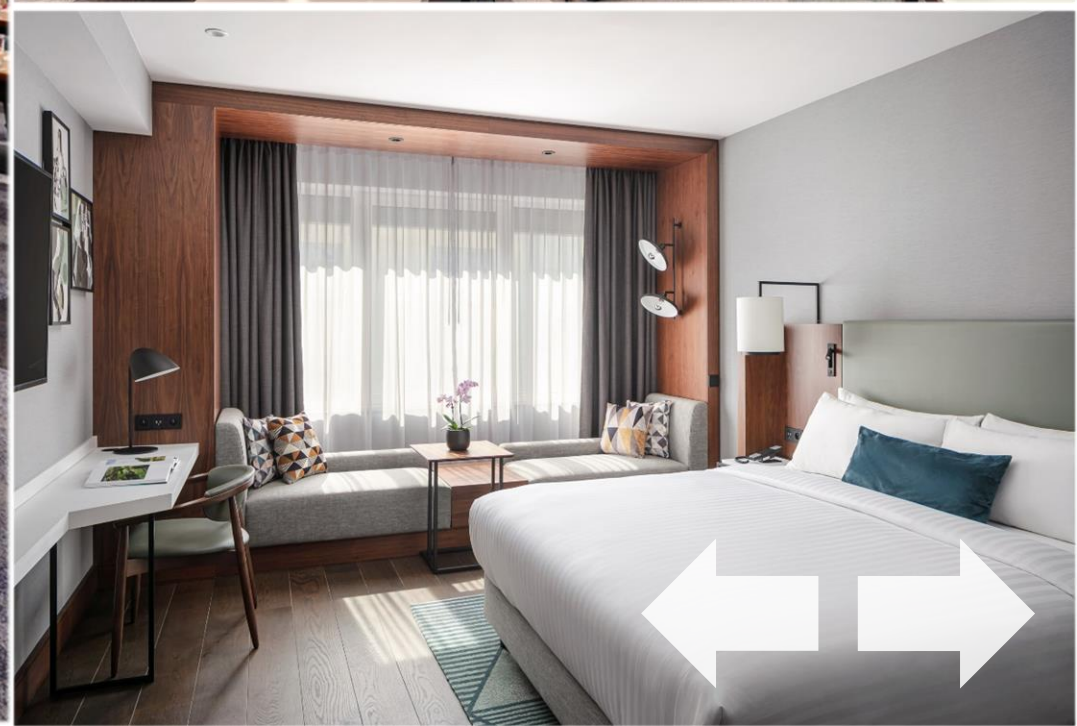
Largest hall (theatre): **650 pax**



Number of Meeting Rooms: **14**





Hotel Rooms: **416**



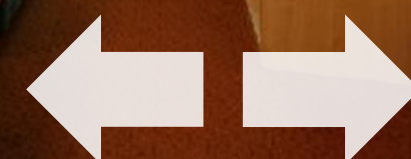
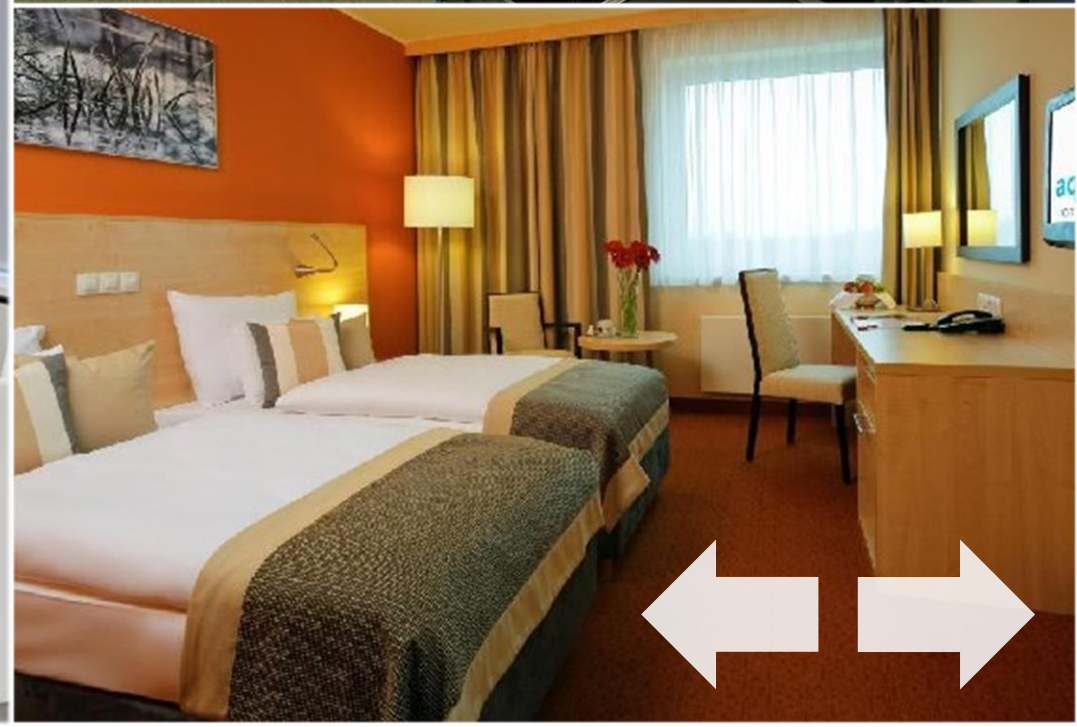
# Aquapalace Hotel Prague



 Largest hall (theatre): **650 pax**

 Number of Meeting Rooms: **10**

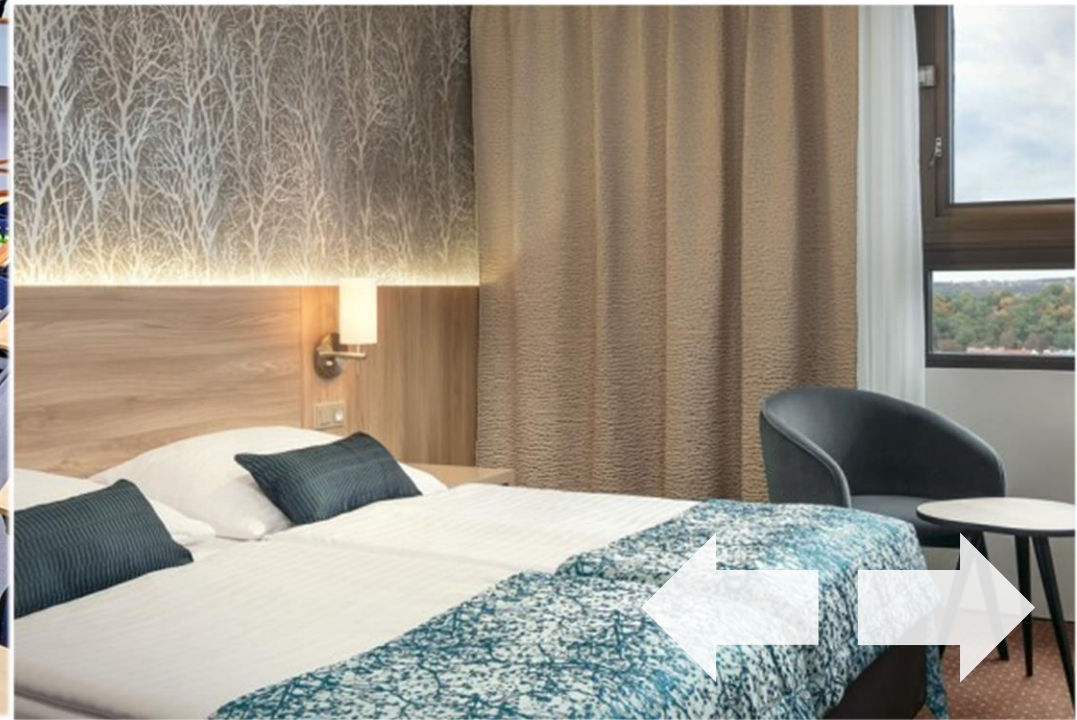
 Hotel Rooms: **231**



# Congress & Wellness Hotel Olšanka SUPERIOR



-  Largest hall (theatre): **600 pax**
-  Number of Meeting Rooms: **15**
-  Hotel Rooms: **252**



# Vienna House by Wyndham Diplomat Prague



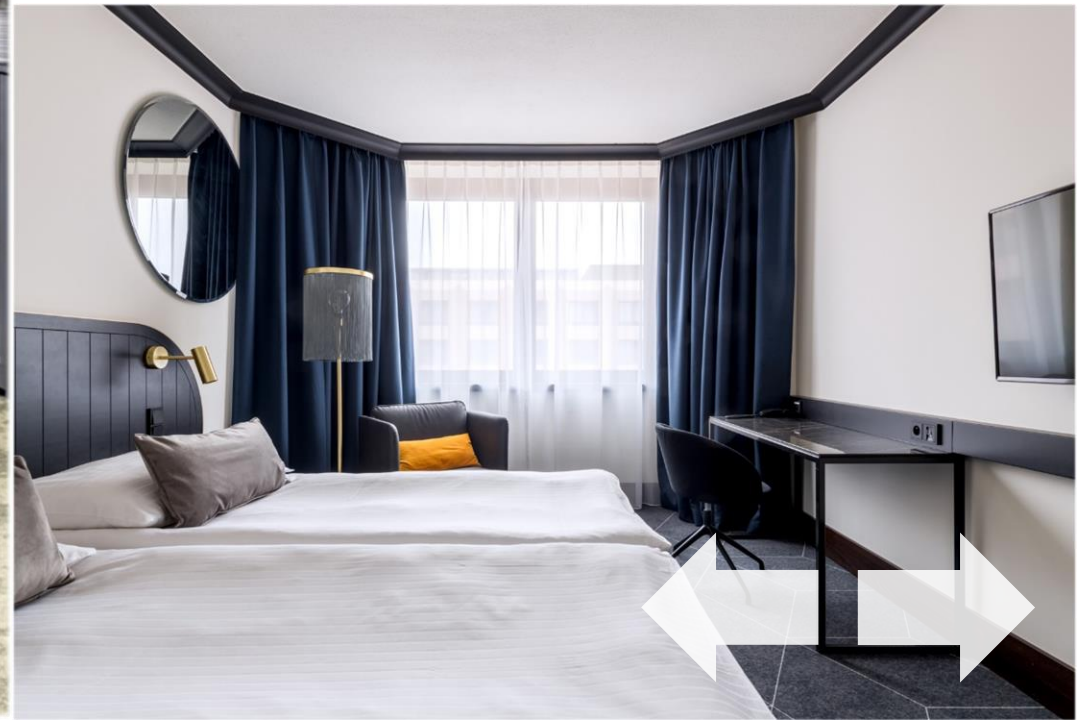
Largest hall (theatre): **500 pax**



Number of Meeting Rooms: **25**



Hotel Rooms: **398**



# Grand Hotel Prague Towers



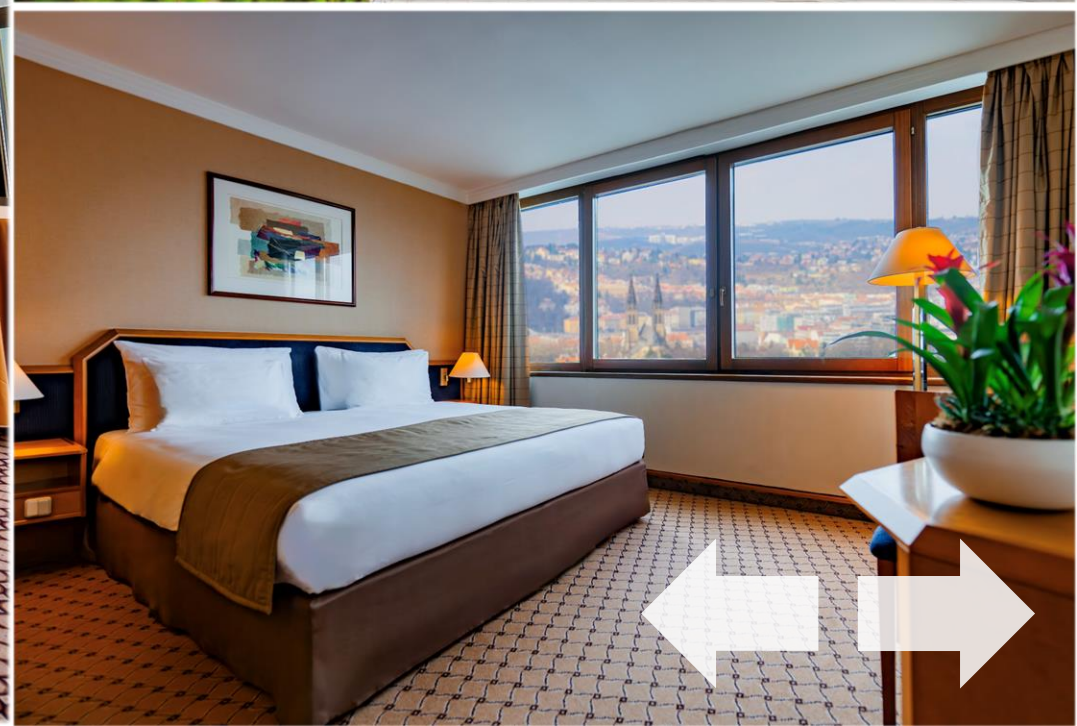
Largest hall (theatre): **500 pax**



Number of Meeting Rooms: **24**



Hotel Rooms: **539**



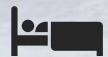
# Orea Hotel Pyramida



Largest hall (theatre): **500 pax**



Number of Meeting Rooms: **12**



Hotel Rooms: **340**



# Medium Meeting Capacity Hotels

(200 - 500 pax)

Click the photos for more info



**NH Prague City & NH Collection Prague**  
440 rooms



**Grandium Hotel Prague**  
365 rooms



**Hotel Hilton Prague Old Town**  
303 rooms



**Fairmont Golden Prague Hotel**  
297 rooms, opening end of 2024



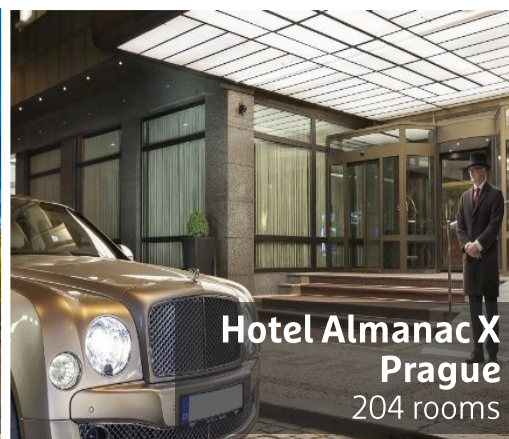
**Vienna House by Wyndham Anel's Prague**  
290 rooms



**Mama Shelter Prague**  
238 rooms



**Occidental Praha**  
230 rooms



**Hotel Almanac X Prague**  
204 rooms



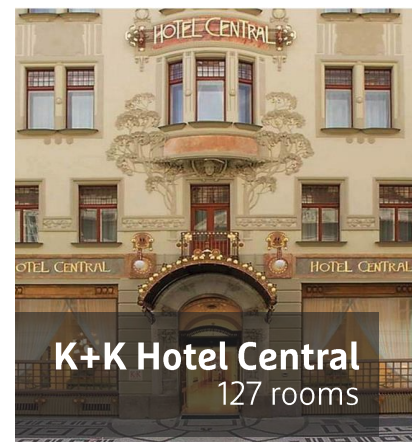
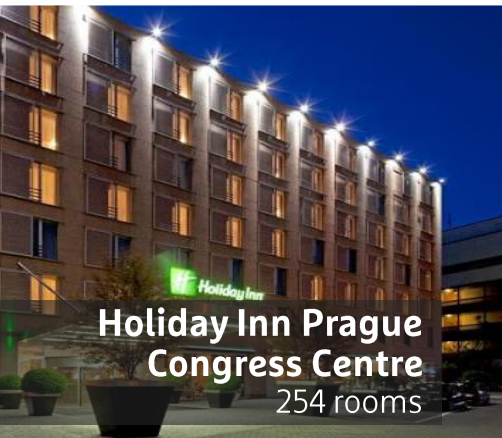
**NH Collection Prague Carlo IV**  
152 rooms



# Smaller Meeting Capacity Hotels

(up to 200 pax)

[Click the photos for more info](#)

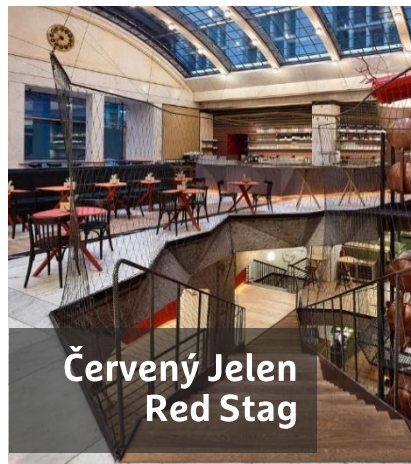




# Social Event Venues



National House of  
Vinohrady



Červený Jelen  
Red Stag



Municipal House  
- Vyšehrad 2000



Hard Rock Café  
Prague



Lobkowitz Palace  
Prague Castle



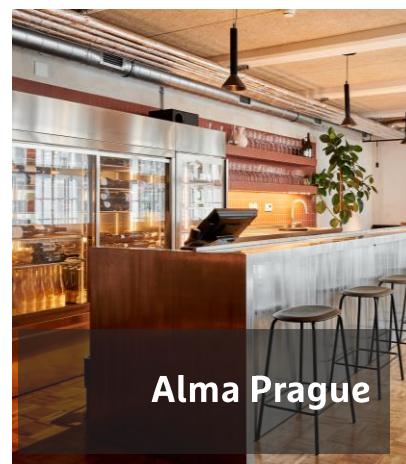
Martinic Palace



Kunsthalle Prague



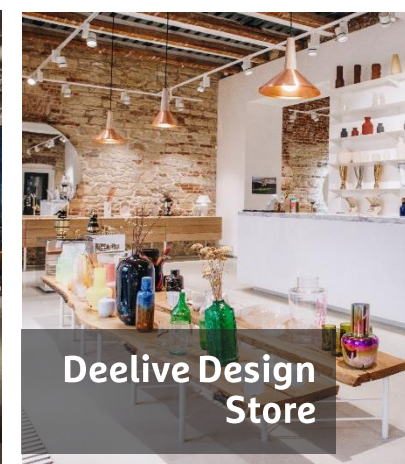
Pilsner Urquell:  
The Original Beer  
Experience



Alma Prague



Mlýnec Restaurant



Deelive Design  
Store



# National House of Vinohrady



Total Capacity: **1 500 pax**



Number of Rooms/Halls: **8**

# Červený Jelen Red Stag



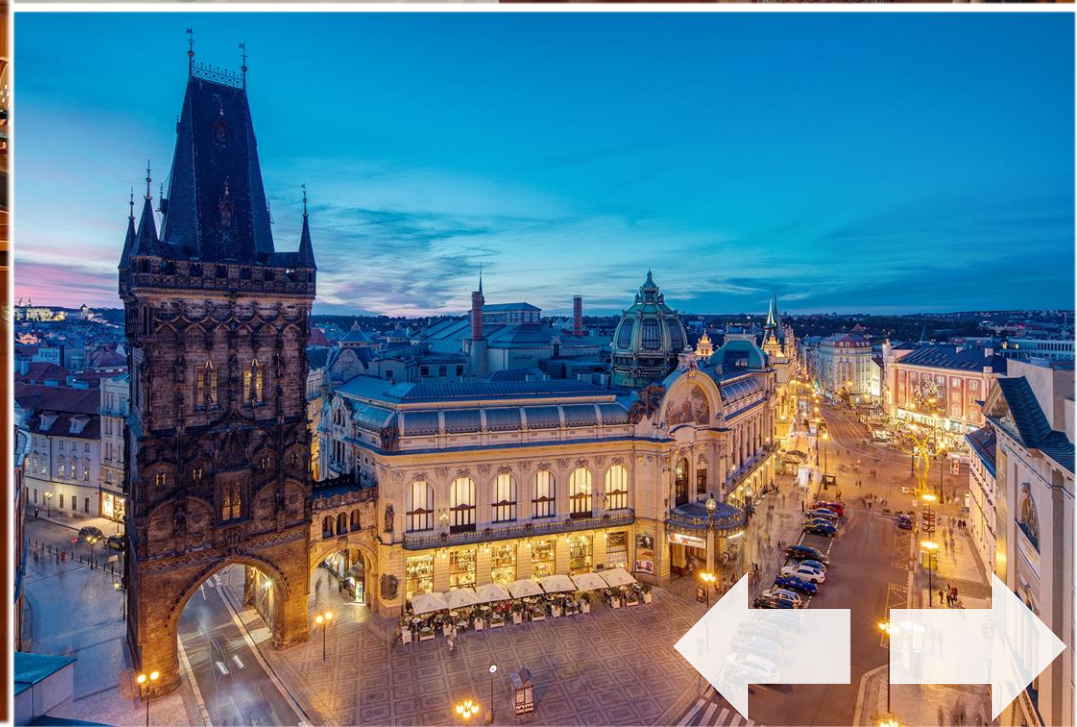
Total Capacity: **1 100 pax**



Number of Rooms/Halls: **13**



# Municipal House - Vyšehrad 2000

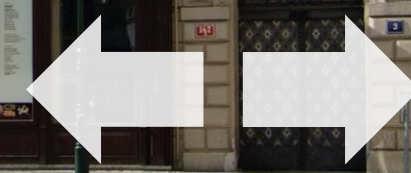
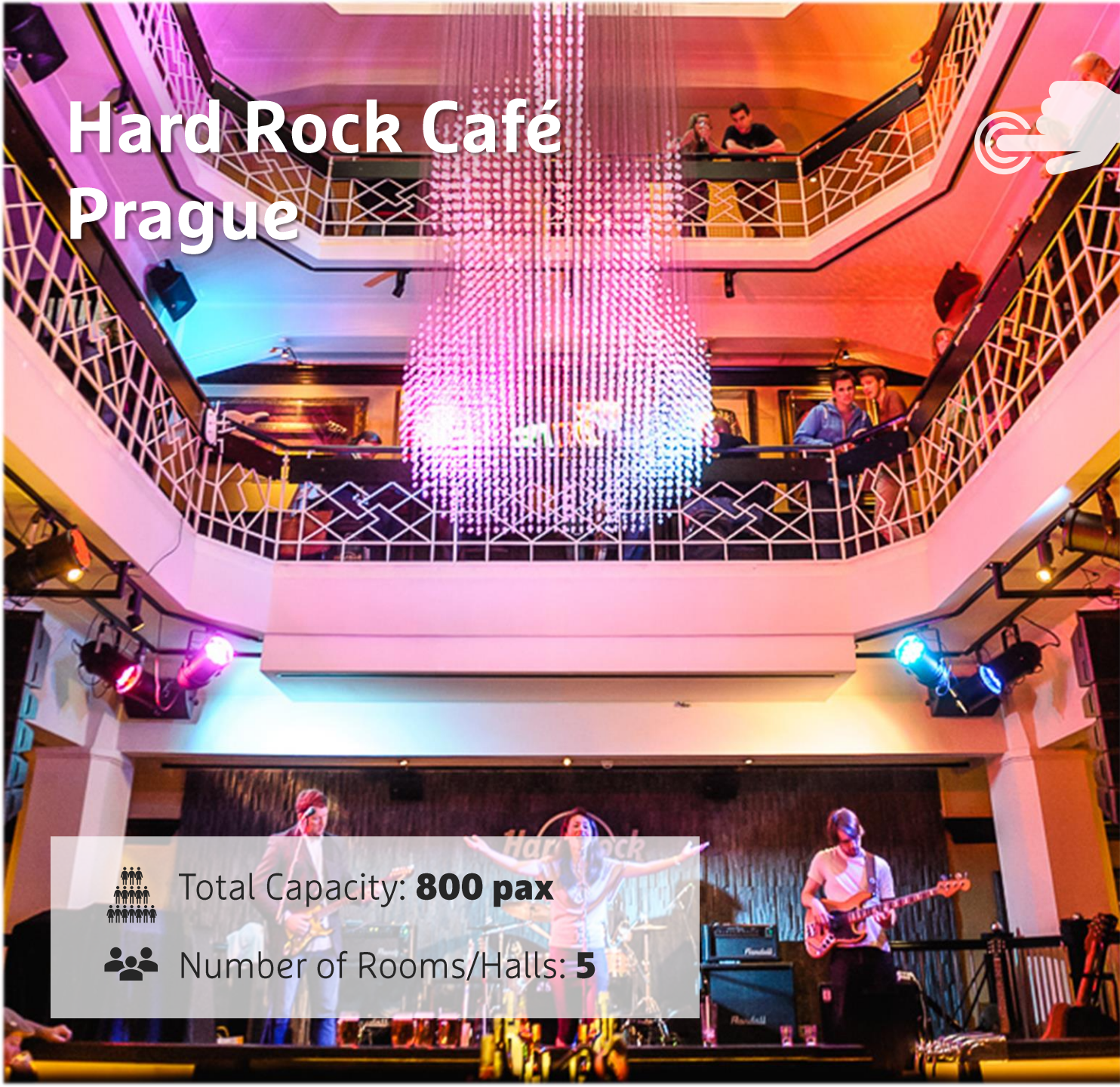


Total Capacity: **885 pax**



Number of Rooms/Halls: **5**

# Hard Rock Café Prague



Total Capacity: **800 pax**



Number of Rooms/Halls: **5**

# Martinic Palace



Total Capacity: **800 pax**



Number of Rooms/Halls: **4**

# Lobkowitz Palace Prague Castle

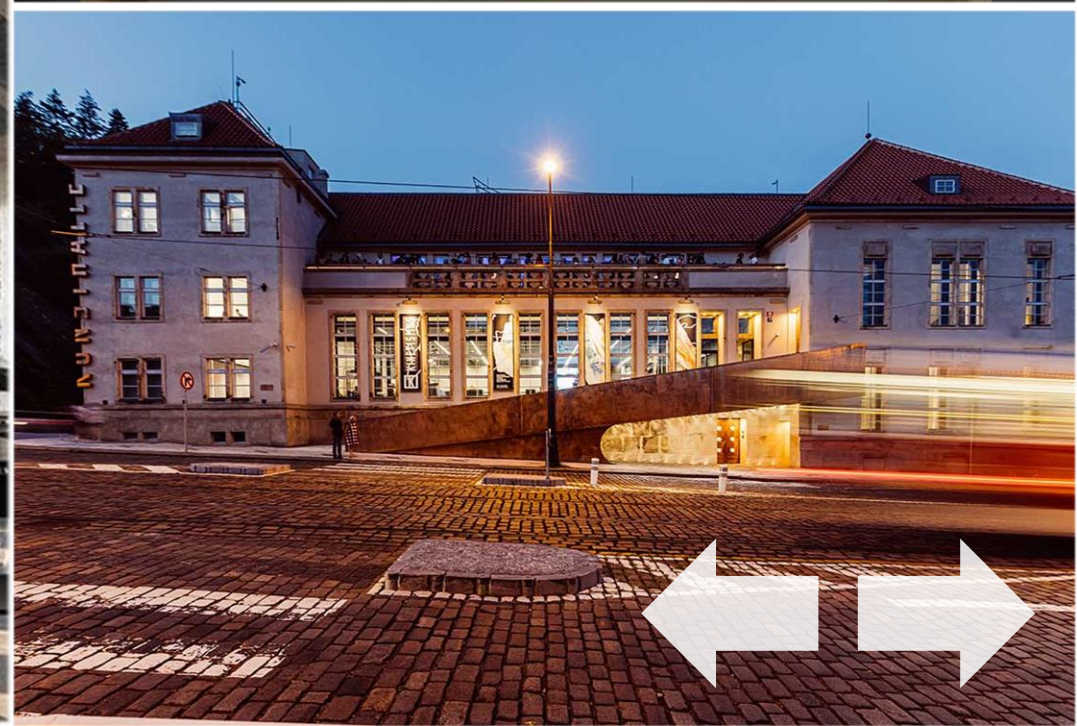
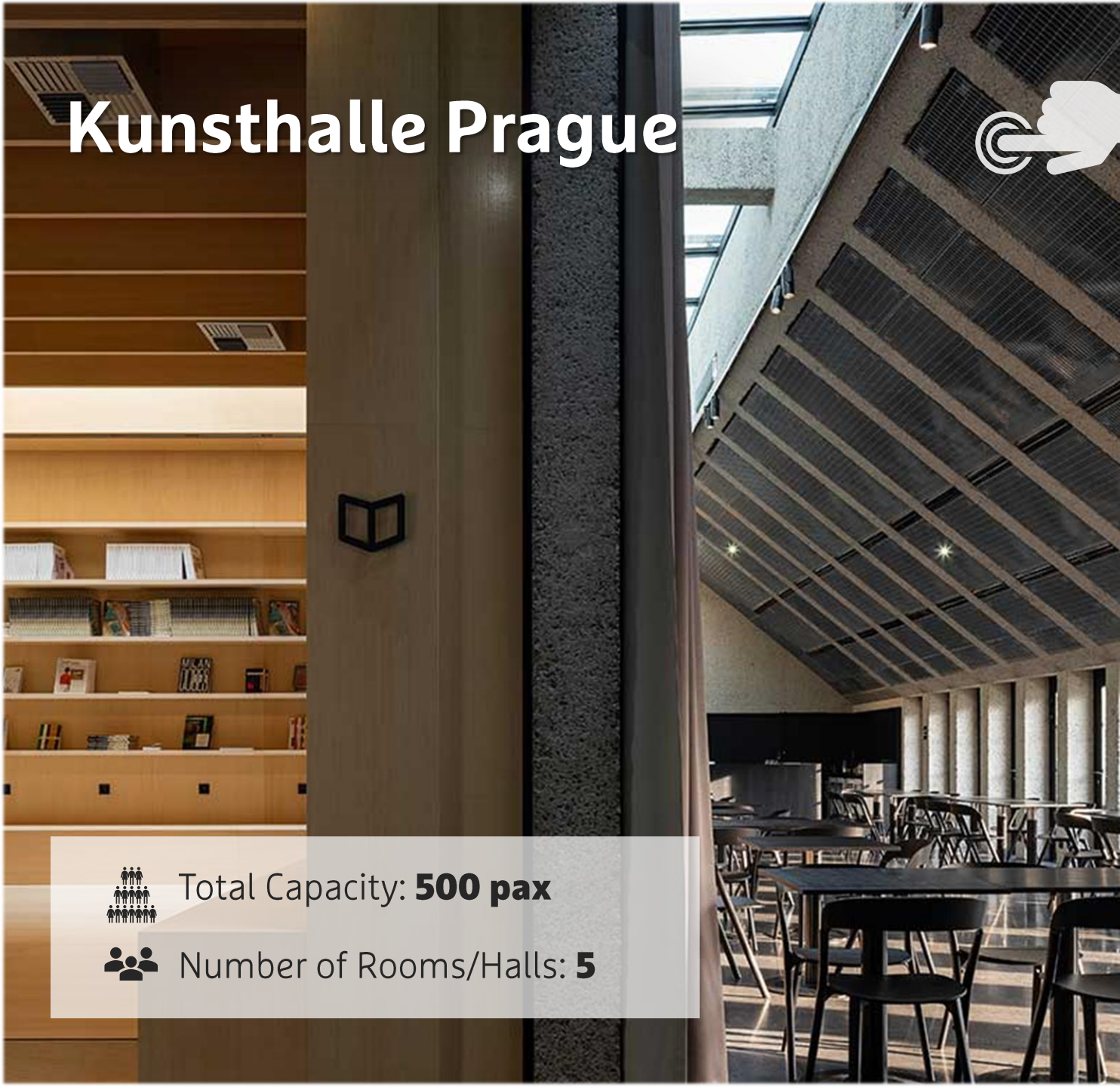


Total Capacity: **650 pax**



Number of Rooms/Halls: **16**

# Kunsthalle Prague



Total Capacity: **500 pax**



Number of Rooms/Halls: **5**



# Pilsner Urquell: The Original Beer Experience



Capacity: **400 pax**



Number of Rooms/Halls: **5**

# Alma Prague



Capacity: **350 pax**



Number of Rooms/Halls: **7**

# Mlýnec Restaurant



Capacity: **280 pax**



Number of Rooms/Halls: **1**

# Deelive Design Store



Total Capacity: **70 pax**



Number of Rooms/Halls: **3**



# Incentive Ideas

- Old-timer Car Rally
- Beer Tour or Beer Spa
- Wine Tasting
- T3 Coupé Tram Ride
- Treasure Hunt
- Glass Decoration
- Movie Prague
- Dragon Boats
- Folklore Garden
- Karting



PCO:



DMC:



Services:



# Value for money

- Public transport (24-hour ticket) | 4,8 EUR
- Museum entrance | 11 EUR
- Glass of beer (0,5 l) | 2,8 EUR
- Business lunch (3 courses) | 25 EUR
- Business dinner (3 courses) | 50 EUR
- Espresso in a bar | 2,5 EUR
- Concert ticket | from 25 EUR



# Local Support

- **Financial support** to association events with more than 300 delegates
- Free/discounted **public transportation tickets**
- **Marketing support**
- Maps and brochures







**We look forward to meeting you in Prague!**